

THINKING DIFFERENTLY



# SculpturedSASH

Contemporary PVCu Casement Window



SculpturedSASH

**Optional**



**Chamfered Bead**

**Standard**



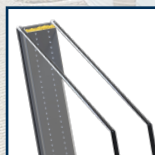
**Sculptured Bead**

**Optional**



**Triple Glazed Bead**

**Standard**



**Double Glazed**

**Optional**



**Triple Glazed**

[whiteline.co.uk](http://whiteline.co.uk)



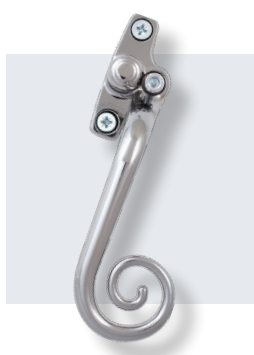
# WINDOW HARDWARE



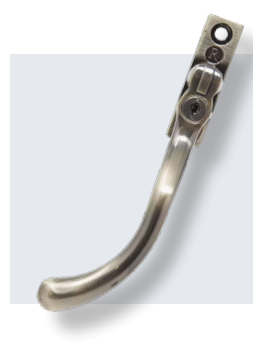
**Offset**



**Contemporary**  
Tear Drop



**Contemporary**  
Monkey Tail



**Traditional**  
Tear Drop



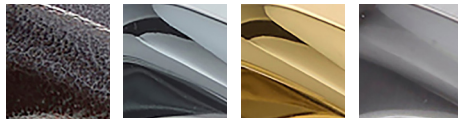
**Traditional**  
Monkey Tail

**Offset**  
Casement Fastener  
Window Handle



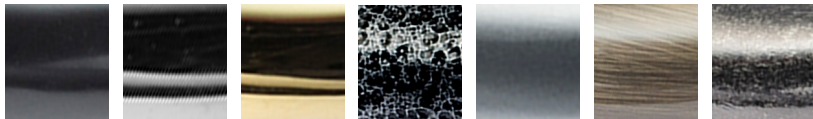
White Black Chrome Gold Graphite Antique Black Satin Bronze Anthracite Grey

**Contemporary**  
Teardrop and  
Monkey Tail Handle



Antique Black Chrome Gold Graphite

**Traditional**  
Teardrop and  
Monkey Tail Handle



Black Chrome Gold Graphite Satin Antique Bronze Pewter Patina

## FINISHES



Anteak



Golden Oak



Black



Cream



Irish Oak



Extended foil range



Agate Grey



Silver Grey



Basalt Grey



Chartwell Green



Blue 5011



RAL, BS or Farrow & Ball

A wide range of grained or smooth foils are available, either for the exterior of the window, the interior or both. In addition to this, we can offer a molecular-bonded spray finish using colours from BS, RAL or Farrow & Ball.

## KEY FEATURES



A range of key-lockable handles in offset, monkey tail and teardrop designs.



Friction stays for smooth and reliable operation all year round.



Window keeps with dual slots enabling a lockable 'slightly-ajar' ventilation position.



Close-up of fusion-welded sash corner and mid-rail overlap.

## OVERVIEW



Extending shootbolts form another part of the multi-point locking system.



Pull-in blocks ensure tight compression of the sash gaskets against the frame.



Expanding 'mushroom bolts' form another part of the multi-point locking system.



Hinge guards protect the hinged side of the opening sash for true multi-point locking



## KEY FEATURES Standard Specification

The 'Softline' decorative profile of the SculpturedSASH casement provides a softer, more elegant appearance than the ChamferedSASH.

With a 6-chamber sash and frame profile, the SculpturedSASH ensures excellent thermal performance, and the structural design of the profile ensures a strong and rigid installation.



### TRIPLE GLAZING

Also available with a triple-glazed sealed unit

### 100% LEAD FREE

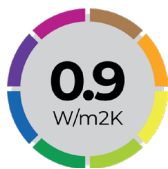
Our PVCu is completely free of poisonous lead stabilisers

### ENERGY EFFICIENCY\*

Whiteline SculpturedSASH is one of the best performing products on the market, taking full advantage of the increased thermal efficiency offered by its six chamber profile.



DOUBLE GLAZED  
U-VALUE\*



TRIPLE GLAZED  
U-VALUE\*



DOUBLE GLAZED  
WER\*

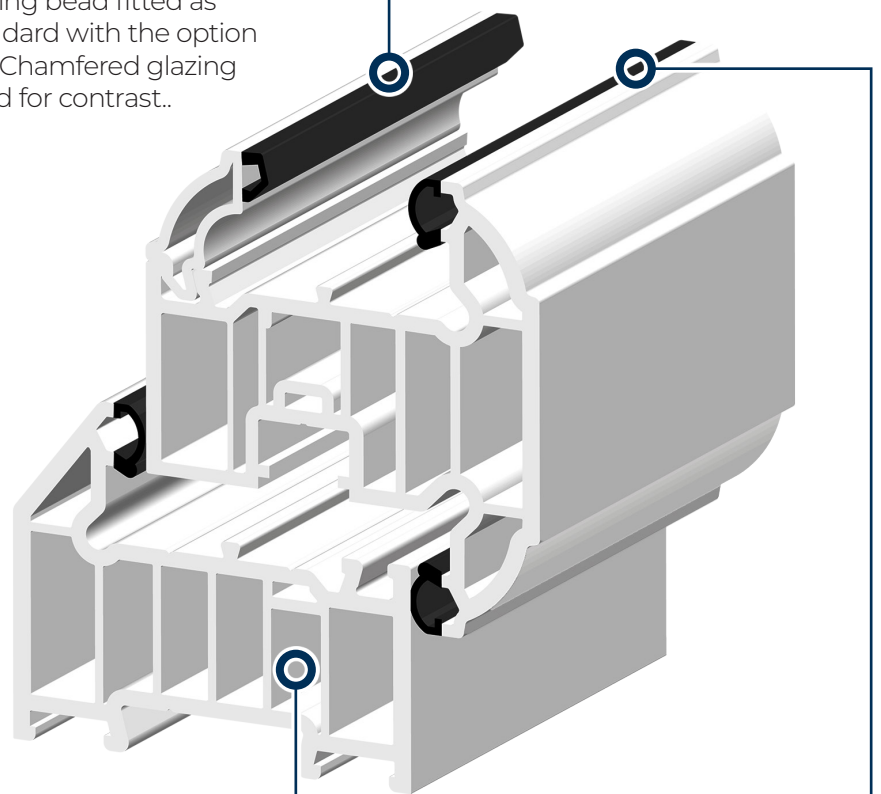


TRIPLE GLAZED  
WER\*

\*Subject to specification

### GLAZING BEAD

Matching Sculptured glazing bead fitted as standard with the option of a Chamfered glazing bead for contrast..



### OUTER FRAME

Six insulating chambers are created in the Sculptured and Chamfered outer frames. You can opt for a contrasting Chamfered outer frame with Sculptured Sashes for a truly bespoke product.

### LOW LEVEL GASKETS

The co-extruded gaskets are barely visible as they don't extend above the level of the sash. Being co-extruded means that they won't shrink either.

